

WASTE & RECYCLING

A Durable, Economical Solution

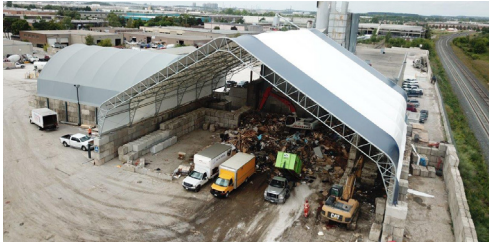
Common Building Types



Apex

Available from 53' - 100' Wide

The Apex Building Series maximizes interior usable space thanks to its tall side walls. The slightly curved roof profile, sharp peak and standard sidewall legs give the Apex style and character, without sacrificing functionality.



Genesis

Available from 80' - 200' Wide

The Genesis Building Series is well suited to a variety of commercial and industrial applications, including salt and sand storage buildings, manufacturing facilities, warehousing, dairy barns and equine riding arenas. With a clear span interior, Genesis buildings offer a large amount of covered but unobstructed space for your operations.



Easy Access

Available from 38' - 67' Wide

The Easy Access Building Series covers your most valuable products while allowing unprecedented access. Unique to this style, choose either end or side (up to an entire side) openings to maximize traffic flow and access. Easy Access buildings are often used for crop, feed, equipment, and vehicle storage.

The Ideal Choice



Sorting Facilities

As an economic alternative to traditional steel or brick buildings, our portable structures provide the type of storage you need for sorting bins.



Compost Facilities

Holding stations for recyclables or a processing facility. Translucent fabric creates an environment of safety for your crews by providing a shadow-free interior.



Transfer Stations

Because they cover a span of up to 300' wide, our fabric structures are an excellent option for temporarily holding waste.

Benefits



Low Operational Costs

Natural light and airflow keep your materials dry, while eliminating the need for excess daytime lighting.



Completely Engineered

Each building is individually run through 3D Finite Element Analysis using site and building specific information by third party engineers.



Spacious Interior

Our free-span interiors reach up to 200 feet wide to allow your equipment to load, unload, and maneuver inside the structure with ease.

Customization Options

- Add in wall openings for suspendible conveyors to maximize space and convenience
- Choose from several durable foundation options including screw piles and concrete blocks
- Expand heights or have multiple leg heights to work with foundation of choice
- Pick custom side and overhead door locations for easy worksite operations



COBRA
STRUCTURES

1-866-473-1635

info@cobraenterprises.ca

www.cobrastructures.ca

60 IXL Crescent,
East Selkirk, MB,
R1A 2A8



[facebook.com/
cobrastructures/](https://facebook.com/cobrastructures/)



[linkedin.com/company/
cobrastructures/](https://linkedin.com/company/cobrastructures/)



[instagram.com/
cobrastructures/](https://instagram.com/cobrastructures/)



[twitter.com/
cobrastructures](https://twitter.com/cobrastructures)

The logo features the word 'BRITESPAN' in large, bold, black letters with a yellow and orange swoosh above it. Below it, in smaller black text, are the words 'BUILDING SYSTEMS INC' and 'AUTHORIZED DEALER'.

BRITESPAN
BUILDING SYSTEMS INC
AUTHORIZED DEALER