



FIRST NATION-OWNED



FAMILY HOMES

Multi-bedroom + duplex options for all families

EXTERIOR

*A combination of space, privacy,
and convenience for families*



Our products provide a superior steel construction modular design, built with materials that will not rot, mould, or deteriorate. They are easily transported and will stand the test of time!

**Why choose
a sustainable
Bison Home
for your
community**



Cozy, modern housing built with durable and sustainable materials.

INTERIOR

READY-TO-MOVE

Built up to 95% complete

- Choose from our product catalogue of homes and commercial buildings to suit your needs
- Transported via road or rail to anywhere in Canada

READY-TO-ASSEMBLE

Built 50-60% complete

- Rough-in and spray foam insulation work done at our fabrication shop
- Transported via road or rail where local tradespeople perform finishing and touch-ups

Living Room



Our biggest room yet.

Designed for the entire family, the common room is a wide open area with the perfect atmosphere for spending quality time together.

Master Bedroom



The pinnacle bedroom.

The staple of every family home option is the master bedroom — the ultimate space for comfort and privacy.

Bathroom



Space for the whole family.

Finished with a stunning countertop, multiple sinks, and a bathtub and showerhead, the bathroom offers everything a family needs.

SINGLE FAMILY HOMES

Detached homes with large master bedrooms available in 2, 3 or 4-bedroom layouts.



DUPLEX HOMES

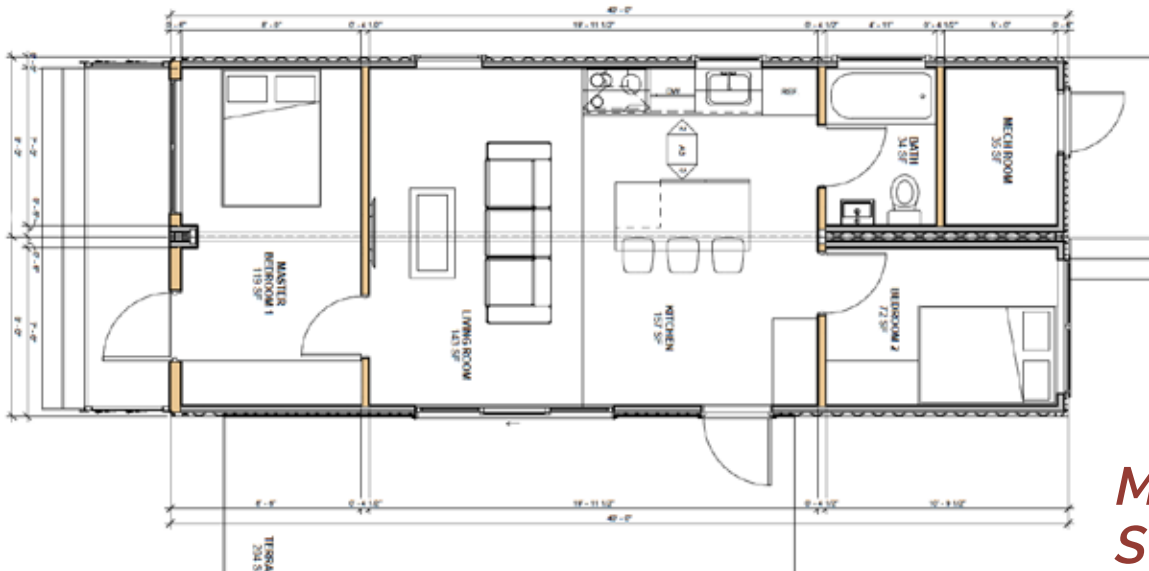
Multi-family living available
in 2-bedroom homes or open
concept bachelor suites.



LAYOUT

SINGLE FAMILY – 2 Bedroom

The two-bedroom Bison Family Homes are tailored for couples without children or small families.



MODULAR SYSTEM

This floor plan features a master bedroom and one extra bedroom.

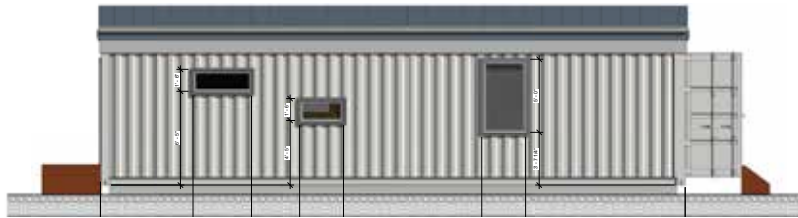


2 Bedroom

2 CONTAINERS

MASTER BEDROOM +
COMMON AREA +
1 BEDROOM

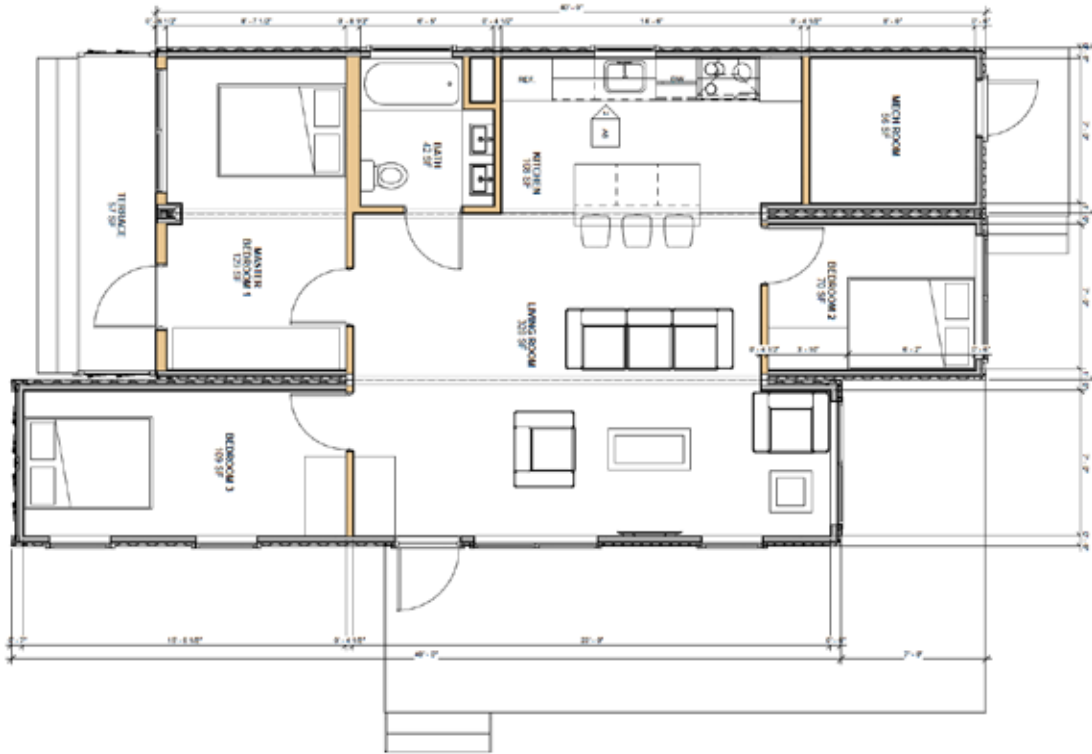
EXTERIOR



LAYOUT

SINGLE FAMILY – 3 Bedroom

The three-bedroom Bison Family Homes provide an excellent option for families with children or frequent guests.



MODULAR SYSTEM

This floor plan features a master bedroom and two extra bedrooms.



3 Bedroom

3 CONTAINERS

MASTER BEDROOM +
COMMON AREA +
2 BEDROOMS

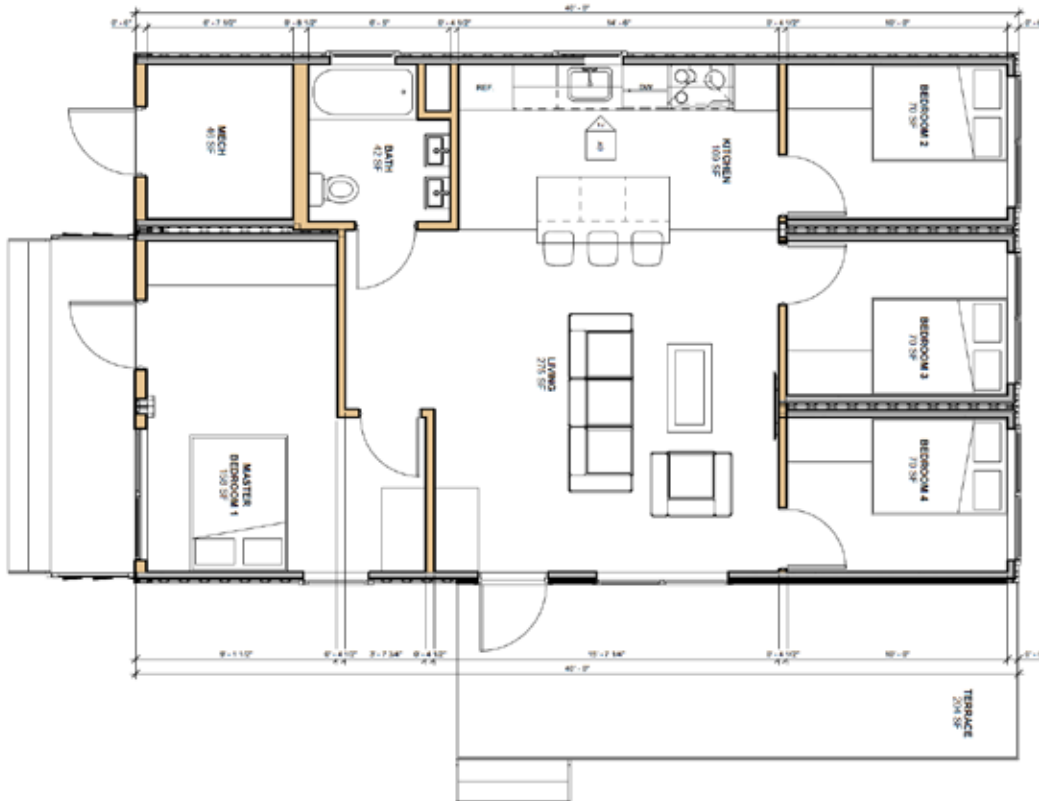
EXTERIOR



LAYOUT

SINGLE FAMILY – 4 Bedroom

The four-bedroom Bison Family Homes are perfect for larger families, or homeowners who need the extra space.



MODULAR SYSTEM

This floor plan features a master bedroom and three extra bedrooms.

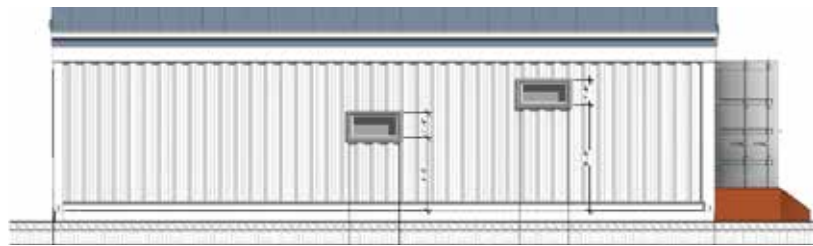


4 Bedroom

3 CONTAINERS

MASTER BEDROOM +
COMMON AREA +
3 BEDROOMS

EXTERIOR



LAYOUT

DUPLEX – 2 Bedroom

The two-bedroom Bison Duplex Homes offer equal-sized suites to accommodate multiple families. This model can be built as individual units too.

Duplex 2

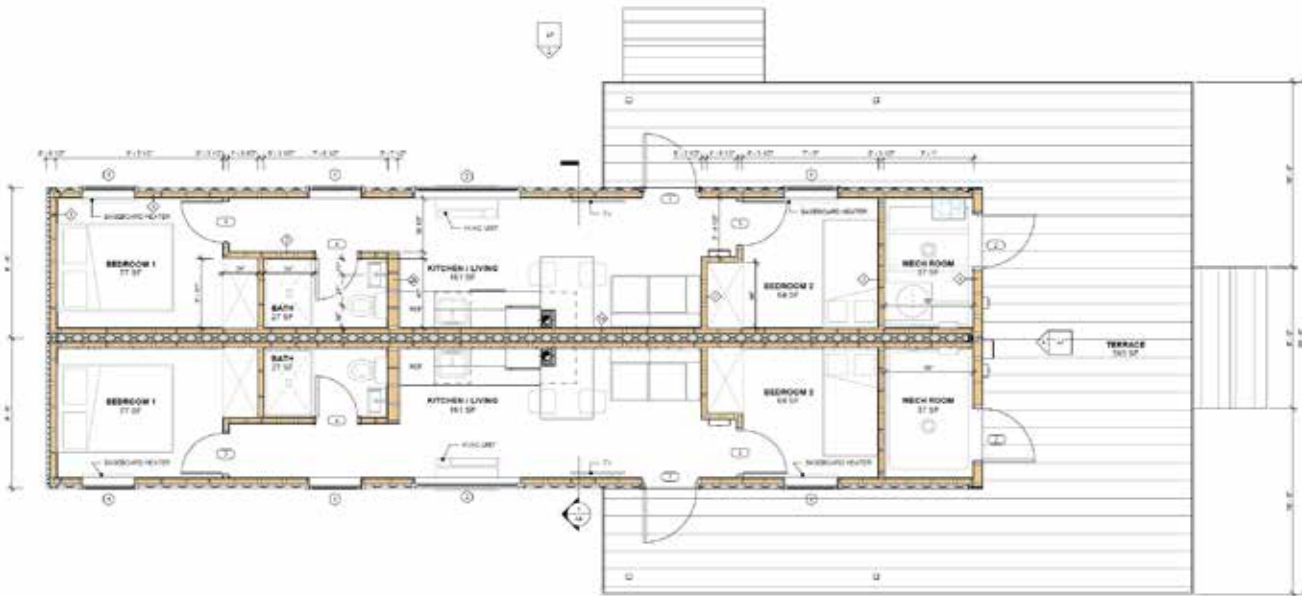
2 CONTAINERS

2 BEDROOMS (PER HOME)

IDENTICAL KITCHENS

MODULAR SYSTEM

This floor plan features two homes with mirrored layouts, each complete with two bedrooms, one bathroom, and kitchen and living spaces.



DUPLEX – Bachelor Suite

The bachelor suite Bison Duplex Homes incorporate everything you need into an efficient and compact space. This model can be built as individual units too.

LAYOUT

MODULAR SYSTEM

This floor plan features two homes each complete with an open bedroom, one bathroom, and living and kitchen spaces.

Duplex 2

2 CONTAINERS

BEDROOM

LIVING AREAS

3-PIECE BATHROOM



EXTERIOR

DUPLEX ELEVATIONS

When more suites are needed, we can add them to the end of the building.



SPECIFICATIONS

STABILITY

Foundation and structure

- Fully welded 8" structural steel channel
- Steel foundation welded to container shell
- Recycled shipping container that has to be air tested for quality
- Structural steel supports for windows and doors
- Structural steel channel supports for large openings

Insulation

- Floor cavity R36 ROCKWOOL insulation
- Exterior walls R24 closed cell spray foam
- Ceiling R70 combination of closed cell spray foam and ROCKWOOL Cellulose insulation

EXTERIOR

Framing

- Combination of wood and steel stud framing for walls, floor and ceiling

Finish

- Combination of Industrial painted container siding and KWP composite siding
- Pressure treated decks and stairs
- Vinyl triple pane casement windows with a layer of LEXAN glass on outside
- Doors insulated steel

INTERIOR

Finish

- Walls commercial grade vinyl wrapped 1/2" drywall
- Ceiling Tongue and groove pine 1" x 6"
- Flooring Vinyl plank
- Baseboard trim commercial vinyl
- Door frames commercial steel with hollow core door panels

Millwork

- Kitchen cabinets boxes 3/4" plywood construction
- Option of Oak shaker doors or Melamine flat panel doors
- Hardware all slow close and 180 degree swing door hinges
- Counter tops FLOFORM laminate

Plumbing

- Hytec One piece shower stall
- Delta Fixtures
- Pex water lines
- PVC sanitation lines, PVC water cistern

HVAC

- PTAC heat pump with air conditioning
- Resistant electric back up in bedrooms
- HRV supplying fresh air

Electrical

- Overhead or underground service connection

PARTNERS



SOCIAL MEDIA



@bisoncontainers



Bison Container Homes



@bisoncontainers



Bison Container Homes



*Randy Janzen from
Bison Container Homes welding a container*



Contact Information

Phone: 204-800-8099
Toll-free: 1-866-473-1635
info@cobraenterprises.ca

60 IXL Crescent
East Selkirk, Manitoba R1A 2A8
www.cobrastructures.ca