

FIRST NATION-OWNED



PROFESSIONAL ACCOMMODATIONS

Sustainable buildings for northern communities

EXTERIOR

*A home away from home
for professional workers*



Our products provide a superior steel construction modular design, built with materials that will not rot, mould, or deteriorate. They are easily transported and will stand the test of time!

**Why choose
a sustainable
Bison Home
for your
community**



LIVING ROOM



INTERIOR

Ready-to-move

- Built in our fabrication shop up to 95% complete
- Choose from our product catalogue of homes and commercial buildings to suit your needs
- Transported via road or rail to anywhere in Canada

ENTRANCE



Not enough space? Think again.

A welcoming entrance greets all workers with an open area to store jackets, shoes, and whatever else.

OFFICE



Need a quiet room? We got it.

Whether it's an office or an area for peace and privacy, we have designed an extra room for such purposes.

KITCHEN



Need a place to cook? Of course!

Attached to the main room, the kitchen is complemented with natural light and space to cook any meal.

LAYOUT

FLOOR PLAN

The Bison Professional Accommodations modular design buildings can be ordered with any combination of the suite A or B options into one building.



Modular System

This floor plan features only suite A living spaces with a shared kitchen and living room area.

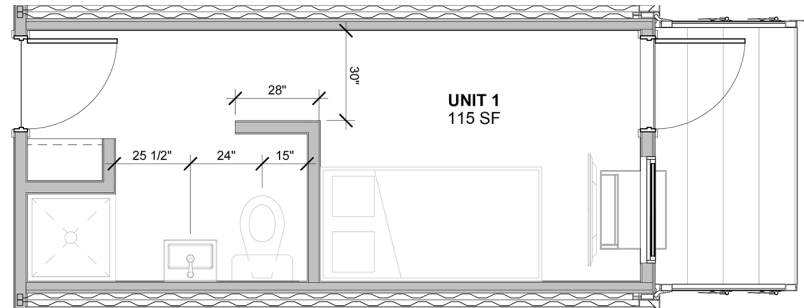


Suite A

1 CONTAINER

BEDROOM +
EN SUITE

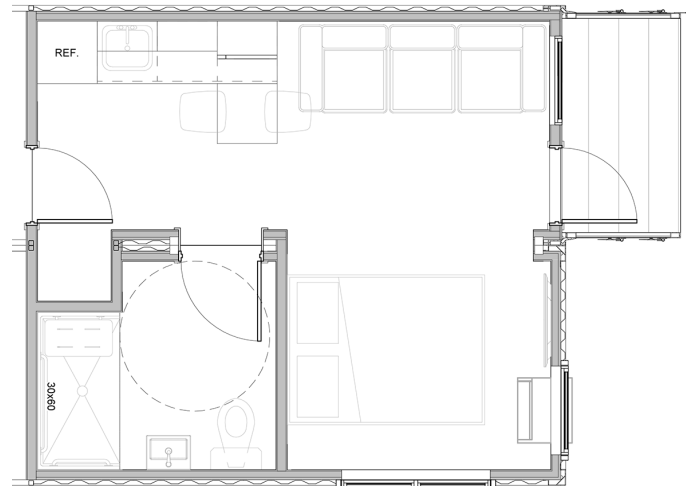
LAYOUT



Suite B

2 CONTAINERS

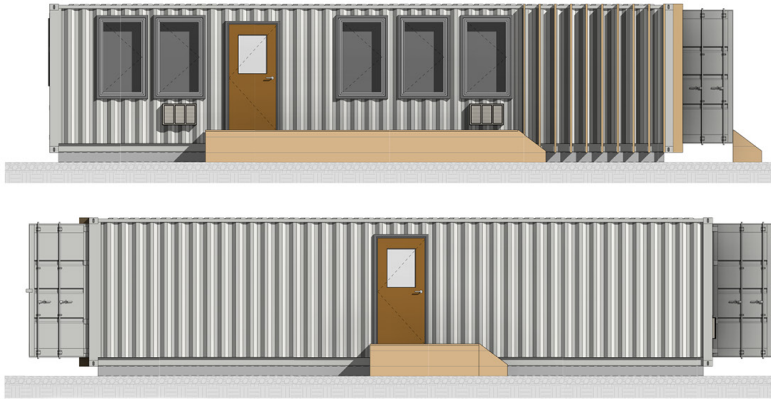
BEDROOM +
BATHROOM
plus
KITCHENETTE +
LIVING ROOM



LAYOUT

EXTERIOR ELEVATIONS

When more suites are needed, we can add them to the end of the building. Options also include building up by adding a second story.



*Front and back
of assembled
building*

*Side view of
assembled
building*



SPECIFICATIONS

STABILITY

Foundation and structure

- Fully welded 8" structural steel channel
- Steel foundation welded to container shell
- Recycled shipping container that has to be air tested for quality
- Structural steel supports for windows and doors
- Structural steel channel supports for large openings

Insulation

- Floor cavity R36 ROCKWOOL insulation
- Exterior walls R24 closed cell spray foam
- Ceiling R70 combination of closed cell spray foam and ROCKWOOL Cellulose insulation

EXTERIOR

Framing

- Combination of wood and steel stud framing for walls, floor and ceiling

Finish

- Combination of Industrial painted container siding and KWP composite siding
- Pressure treated decks and stairs
- Vinyl triple pane casement windows with a layer of LEXAN glass on outside
- Doors insulated steel

INTERIOR

Finish

- Walls commercial grade vinyl wrapped 1/2" drywall
- Ceiling Tongue and groove pine 1" x 6"
- Flooring Vinyl plank
- Baseboard trim commercial vinyl
- Door frames commercial steel with hollow core door panels

Millwork

- Kitchen cabinets boxes 3/4" plywood construction
- Option of Oak shaker doors or Melamine flat panel doors
- Hardware all slow close and 180 degree swing door hinges
- Counter tops FLOFORM laminate

Plumbing

- Hytec One piece shower stall
- Delta Fixtures
- Pex water lines
- PVC sanitation lines, PVC water cistern

HVAC

- PTAC heat pump with air conditioning
- Resistant electric back up in bedrooms
- HRV supplying fresh air

Electrical

- 100 or 200 amp main panel
- Overhead or underground service connection

PARTNERS



SOCIAL MEDIA

 @bisoncontainers

 Bison Container Homes

 @bisoncontainers

 Bison Container Homes



*Randy Janzen from
Bison Container Homes
welding a container*



Contact Information

Phone: 204-800-8099
Toll-free: 1-866-473-1635
info@cobraenterprises.ca

60 IXL Crescent
East Selkirk, Manitoba R1A 2A8
www.cobrastructures.ca