

FIRST NATION-OWNED



ELDERS HOMES

Affordable living for elders in northern communities

EXTERIOR

*All the space you need
for comfortable living*



Our products provide a superior steel constructed modular design, built with materials that will not rot, mould, or deteriorate. They are easily transported and will stand the test of time!

**Why choose
a sustainable
Bison Home
for your
community**



INTERIOR



Ready-to-move

- Built in our fabrication shop up to 95% complete
- Choose from our product catalogue of homes and commercial buildings to suit your needs
- Transported via road or rail to anywhere in Canada

Accessible



Fitting all of your needs.

The entire home, including the bathrooms, are fully accessible with a barrier-free shower, sink, and toilet.

Spacious



Making inside comfortable.

Each room is spread out to provide freedom for unique interior design and ample space to relax.

Multipurpose



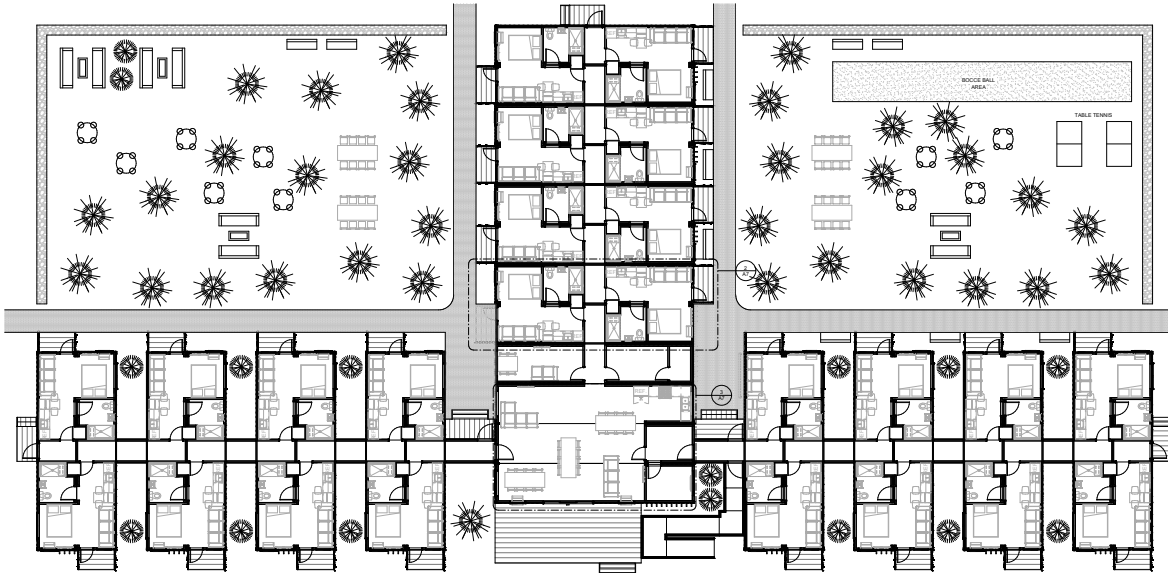
Cook, gather, and relax all together!

An open floor plan is important when building your own personal suite for the ultimate living experience.

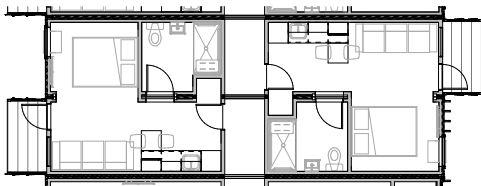
LAYOUT

FLOOR PLAN

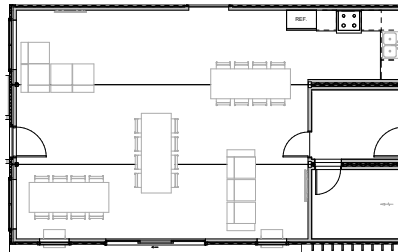
The Bison Elders Homes modular design buildings provide an all-in-one suite for elders. A common area in the centre of the property can be utilized for dining and larger gatherings.



ELDER'S HOUSING OPTION 3 - FLOOR PLAN
1/8" = 1'-0"



TYPICAL UNIT



COMMON DINING AREA

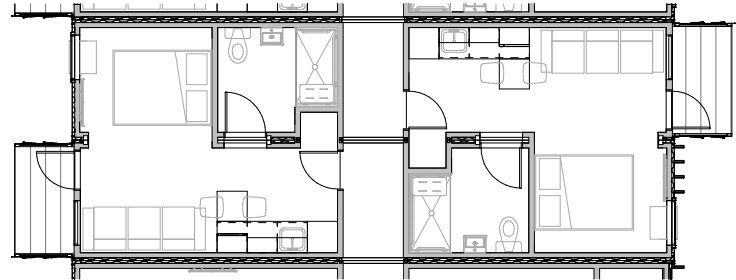
Modular System

This floor plan features individual suites and a common dining area.



Suite

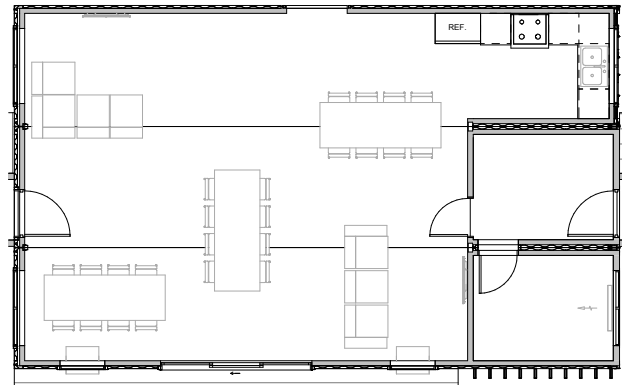
BEDROOM +
EN SUITE +
plus
KITCHENETTE +
LIVING ROOM



LAYOUT

Common Area

KITCHEN +
DINING TABLES +
LOUNGE



LAYOUT

EXTERIOR ELEVATIONS

When more suites are needed, we can add them to the end of the building. Options also include building up by adding a second story.



Front and back of assembled building

Side view of assembled building



SPECIFICATIONS

STABILITY

Foundation and structure

- Fully welded 8" structural steel channel
- Steel foundation welded to container shell
- Recycled shipping container that has to be air tested for quality
- Structural steel supports for windows and doors
- Structural steel channel supports for large openings

Insulation

- Floor cavity R36 ROCKWOOL insulation
- Exterior walls R24 closed cell spray foam
- Ceiling R70 combination of closed cell spray foam and ROCKWOOL Cellulose insulation

EXTERIOR

Framing

- Combination of wood and steel stud framing for walls, floor and ceiling

Finish

- Combination of Industrial painted container siding and KWP composite siding
- Pressure treated decks and stairs
- Vinyl triple pane casement windows with a layer of LEXAN glass on outside
- Doors insulated steel

INTERIOR

Finish

- Walls commercial grade vinyl wrapped 1/2" drywall
- Ceiling Tongue and groove pine 1" x 6"
- Flooring Vinyl plank
- Baseboard trim commercial vinyl
- Door frames commercial steel with hollow core door panels

Millwork

- Kitchen cabinets boxes 3/4" plywood construction
- Option of Oak shaker doors or Melamine flat panel doors
- Hardware all slow close and 180 degree swing door hinges
- Counter tops FLOFORM laminate

Plumbing

- Hytec One piece shower stall
- Delta Fixtures
- Pex water lines
- PVC sanitation lines, PVC water cistern

HVAC

- PTAC heat pump with air conditioning
- Resistant electric back up in bedrooms
- HRV supplying fresh air

Electrical

- Overhead or underground service connection

PARTNERS



SOCIAL MEDIA



@bisoncontainers



Bison Container Homes



@bisoncontainers



Bison Container Homes



*Clint Gower completing
electrical work in a
Bison Container Home*



Contact Information

Phone: 204-800-8099
Toll-free: 1-866-473-1635
info@cobraenterprises.ca

60 IXL Crescent
East Selkirk, Manitoba R1A 2A8
www.cobrastructures.ca